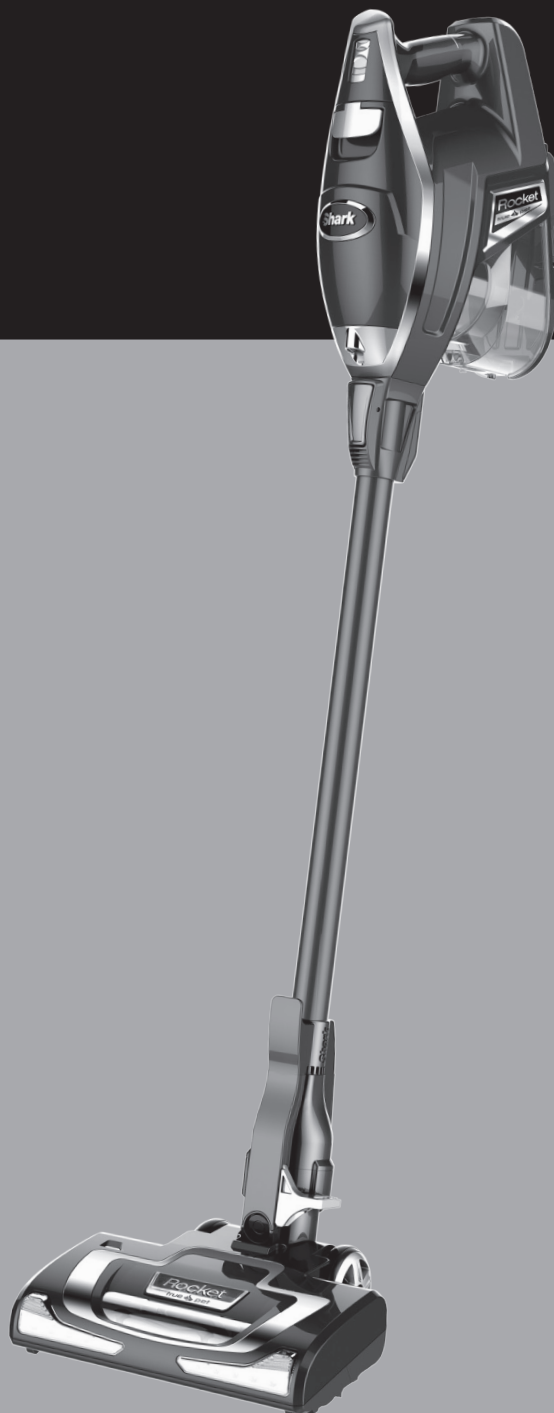


# Shark®

## Rocket™

OWNER'S GUIDE

HV320ANZ



Thank you for purchasing the Shark® Rocket™ Ultra-Light Upright vacuum cleaner.

This Owner's Guide is designed to help you get a complete understanding of your new vacuum cleaner. Please read it carefully and keep for future reference.

For a list of what is included with this model, refer to inside flap of box.

We are constantly striving to improve our products, therefore the specifications contained herein are subject to change without notice.

If you should have a question about your Shark® Rocket™, please call AUST: 1800 890 840 or NZ: 0800 002 999.

THANK YOU!

REGISTER YOUR PURCHASE:

☎ AUST: 1800 890 840

☎ NZ: 0800 002 999

RECORD THIS INFORMATION:

Model Number: \_\_\_\_\_

Date of Purchase (Keep receipt):  
\_\_\_\_\_

TECHNICAL SPECIFICATIONS:

Voltage: 220-240V~, 50Hz

Watts: 500W

RECOMMENDED FILTER CLEANING SCHEDULE:

See the MAINTENANCE section for filter cleaning instructions

Pre-Motor Filter Kit (Foam & Felt):	<b>1080FTV320</b>	Every month
Post-motor filter:	<b>1084FTV320</b>	Every year



GMA-102233-EA-010



## IMPORTANT SAFEGUARDS

When using an electrical appliance, basic safety precautions should always be observed, including the following:

### **WARNING**

**This appliance is not intended for use by persons with reduced physical, sensory or mental capabilities, or lack of experience and knowledge, unless they have been given supervision or instruction concerning use of the appliance by a person responsible for their safety.**

**Children shall not use or play with this appliance. Close supervision is necessary to keep appliance out of reach of children during use.**

### **CAUTION**

**THE POWER NOZZLE, WAND, MOTORIZED BRUSH AND HANDLE CONTAIN ELECTRICAL CONNECTIONS:**

- These are not serviceable parts.
- Do not use to vacuum any liquids.
- Do not immerse in water when cleaning.
- Prior to use, inspect for damage. Discontinue using if damaged.

### **TO REDUCE THE RISK OF FIRE, ELECTRIC SHOCK OR INJURY:**

- 1 DO NOT use outdoors or on wet surfaces.
- 2 Unplug from electrical outlet when not in use and before servicing.
- 3 DO NOT use with damaged cord or plug. Contact Customer Service or Service Centre for the repair or replacement of the line cord.
- 4 DO NOT USE if the appliance is not working, has been dropped, dropped into water, damaged or left outdoors.
- 5 NO SERVICEABLE PARTS. Incorrect re-assembly or repair can cause a risk of electrical shock or injury to persons when the appliance is used. Contact Customer Service.
- 6 DO NOT pull or carry vacuum cleaner by the cord or use the cord as a handle.
- 7 DO NOT unplug by pulling on cord; to unplug, grasp the plug, not the cord.
- 8 DO NOT handle plug or vacuum cleaner with wet hands.
- 9 DO NOT run the vacuum cleaner over the power cord, close a door on the cord or pull cord around sharp corners.
- 10 The use of an extension cord is not recommended.
- 11 DO NOT leave vacuum cleaner unattended when plugged in.
- 12 Keep cord away from heated surfaces.
- 13 Turn off all controls before plugging or unplugging the vacuum cleaner.
- 14 Always turn off the vacuum cleaner before connecting or disconnecting power nozzle.
- 15 Store your vacuum cleaner with the power cord secured around the two cord holders - as shown in the STORAGE section.
- 16 This vacuum does NOT stand upright on its own.

### **GENERAL USE**

- 17 Use only as described in this manual.
- 18 DO NOT put any objects into openings. DO NOT use with any opening blocked; keep free of dust, lint, hair, and anything that may reduce air flow.
- 19 Keep your work area well lit.
- 20 Keep the vacuum cleaner moving over the carpet surface at all times to avoid damaging the carpet fibres.
- 21 DO NOT place vacuum cleaner on unstable surfaces such as chairs or tables.
- 22 DO NOT use without dust cup and/or filters in place.

### **WAND ATTACHMENTS**

- 23 DO NOT use if air flow is restricted; if the air paths, the wand, or the accessories become blocked, turn the vacuum cleaner off. Remove all obstructions before you turn on the unit again.
- 24 Keep the end of the wand and accessory openings away from face and body.
- 25 Keep cleaning tools and wand suction openings away from hair, face, fingers, uncovered feet, or loose clothing.
- 26 Only use manufacturer's recommended attachments.

### **DUST CUP/FILTERS/ACCESSORIES**

Before turning on the vacuum:

- 27 Make sure that all filters are thoroughly dry after routine cleaning.
- 28 Make sure that dust cup and all filters are in place after routine maintenance. Refer to MAINTENANCE section for filter cleaning instructions.
- 29 Make sure accessories are free of blockages.
- 30 Use only manufacturer's recommended accessories and replacement parts.

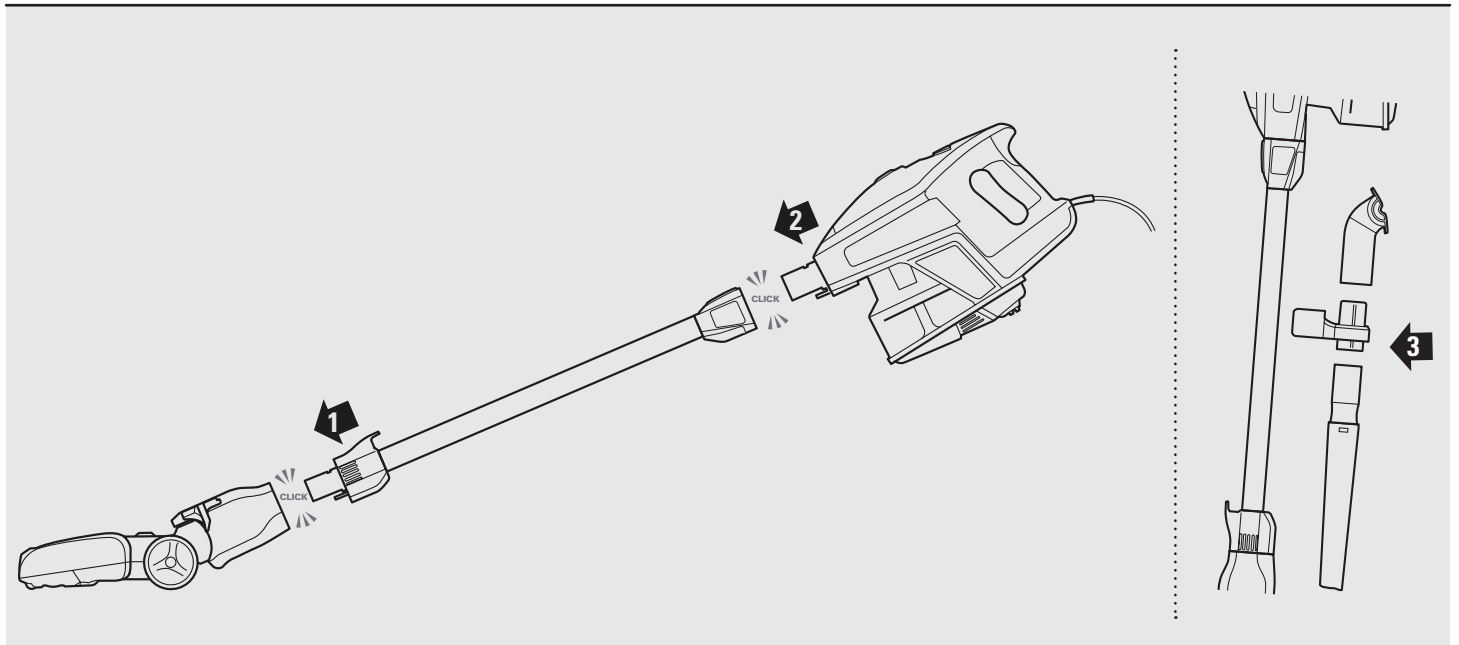
### **GENERAL CLEANING**

- 31 DO NOT pick up large-sized objects.
- 32 DO NOT pick up hard or sharp objects such as glass, nails, screws or coins that could damage the vacuum cleaner.
- 33 DO NOT pick up smoking or burning objects such as hot coals, cigarette butts, or matches.
- 34 DO NOT pick up flammable or combustible materials such as lighter fluid, petrol, or kerosene or use vacuum in areas where they may be present.
- 35 DO NOT pick up toxic solutions such as chlorine bleach, ammonia, or drain cleaner.
- 36 DO NOT use in an enclosed space where vapours are present from paint, paint thinner, moth-proofing substances, flammable dust or other explosive or toxic materials.
- 37 DO NOT vacuum up any liquids.
- 38 DO NOT immerse vacuum cleaner in water or other liquids.
- 39 DO NOT use outdoors or on wet surfaces; use only on dry surfaces.
- 40 Use extra care when cleaning on stairs.

## SAVE THESE INSTRUCTIONS

## ASSEMBLY

- 1 Insert the tube into the floor nozzle connector.
- 2 Insert the handheld portion into the top of the tube.
- 3 This vacuum comes with a detachable clip to store up to two accessories on board. Snap the detachable clip onto the tube. Store one accessory on top holder and one accessory on bottom holder.



**⚠ WARNING:** When vacuuming fine dust (sawdust, sand, flour, talcum powder, etc.) electrostatic charges build up naturally. Under certain conditions these electrostatic charges will be released. To avoid the unpleasant effects of static discharges, a metal strip has been incorporated into the right side of the handle. **PLEASE MAKE SURE THAT YOU KEEP YOUR HAND IN CONSTANT CONTACT WITH THIS METAL STRIP DURING VACUUMING.**



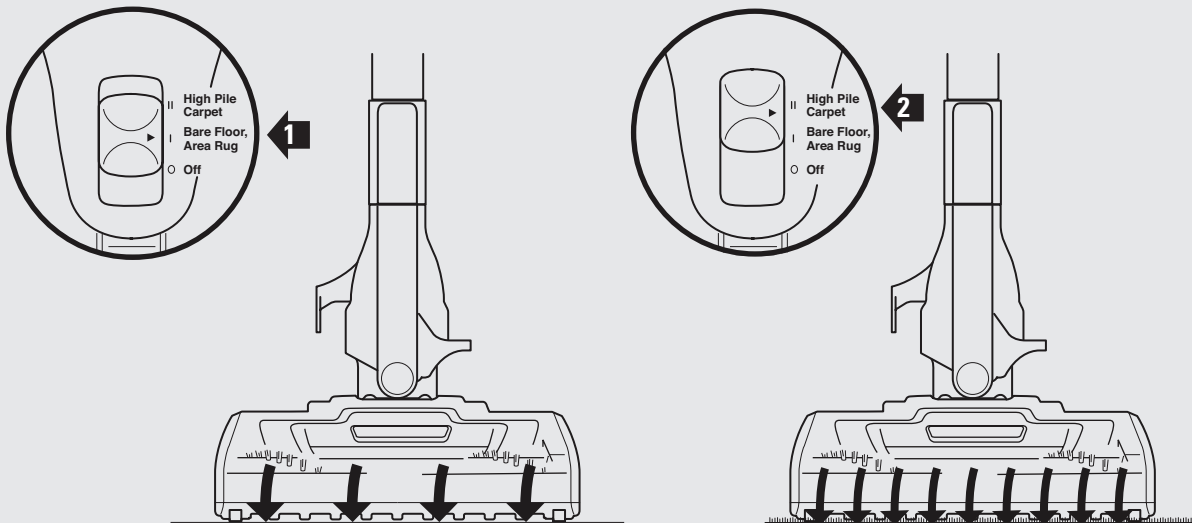
## FLOOR CLEANING

This vacuum has a 2-speed **POWER** slider switch, optimized for bare floor, delicate area rug and carpet cleaning.

The floor nozzle is equipped with headlights that illuminate the floor surface being cleaned. The lights turn on in either speed setting.

- 1** Plug the unit into an outlet. Slide the **POWER** switch to the first position to clean bare floor surfaces and delicate area rugs. The brush roll will spin slowly to help with debris pick-up.
- 2** Slide the **POWER** switch to the second position to clean carpets. The brush roll will spin faster to help pick up debris below the surface.

**NOTE:** This vacuum does NOT stand upright on its own. When taking a break, rest it against a wall or piece of furniture or lay it flat on the floor.



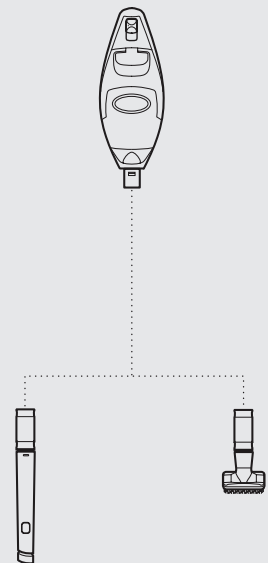
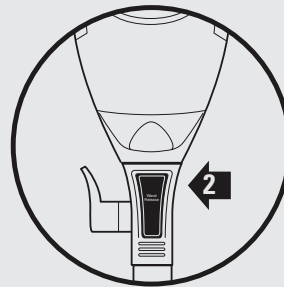
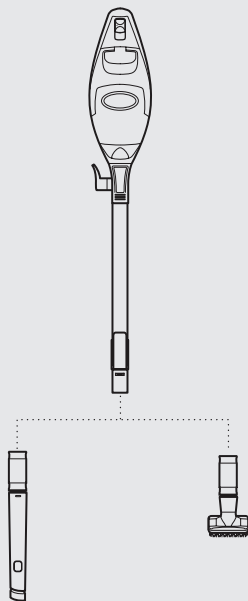
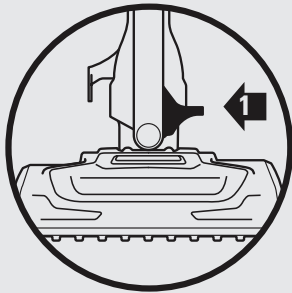
## ABOVE FLOOR CLEANING

This vacuum has the reach to clean up above floors or in tight spaces by using the tube. It also has the convenience of a handheld vacuum when using it without the tube and a light to illuminate the cleaning surface.

- 1 Stand the vacuum upright. Step on the foot pedal on the floor nozzle and pull the tube up to disconnect it from the floor nozzle. Attach desired cleaning accessory.
- 2 Press the button on the top of the tube to pull and disconnect it from the handheld portion. Attach desired cleaning accessory. The LED light in the handheld turns on automatically when the power is on.

**NOTE:** Select cleaning accessories are included with this model. Additional accessories are available for purchase.

*For a list of what is included with this model, refer to inside flap of box.*



## STORAGE

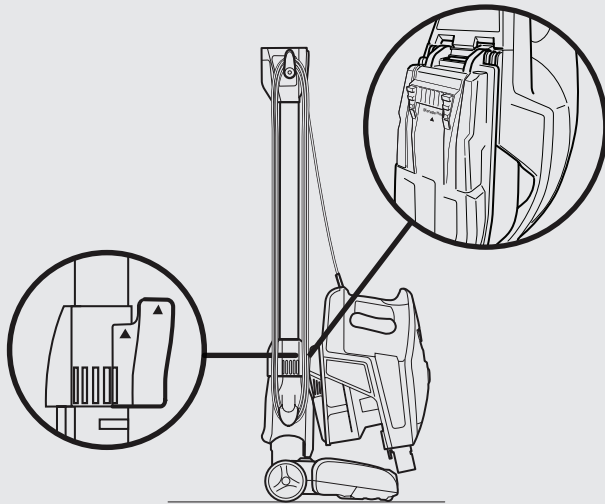
There are two recommended ways to store this vacuum.

**OPTION 1:** Press the button on the top of the tube and pull to separate it from the handheld portion of the vacuum. There is a hook on the bottom of the handheld portion. Hook it onto the hanger that is on the bottom portion of the tube. Wrap the cord around the two cord hooks. The unit is now ready to be stored.

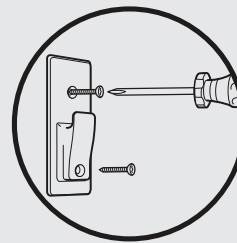
**OPTION 2:** Use the wall mount included in the vacuum box. Drill two 5/16" holes and insert the plastic anchors (also included) into the wall. Use a Phillips head screwdriver to screw the wall mount into the plastic anchors. Hook the bottom of the handheld portion of the vacuum onto the hanger portion of the wall mount.

For more detailed instructions, please refer to the instruction sheet included with the wall mount kit.

### OPTION 1



### OPTION 2



30.5 cm Crevice Tool

227FFJV300

Dusting Brush

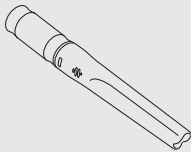
229FFJV300

Cleans hard surfaces and upholstery.

ACCESSORIES

NOTE: Select cleaning accessories are included. Others are available for purchase.

For a list of what is included with this model, refer to inside flap of box.



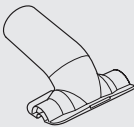
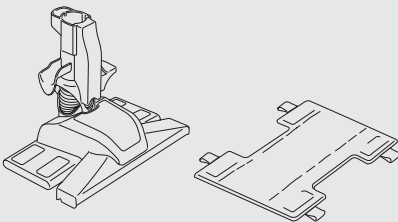
Hard Floor Genie™ With Washable Microfibre Pad

XDAV300

Vacuums and dusts bare floors using washable or disposable pads.

On-Board Upholstery Tool

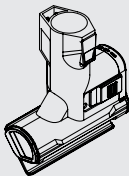
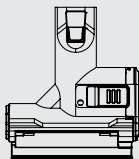
166FLIHV3



TruePet™ Motorized Brush

3107FV320V220

Picks up pet hair, loose debris, and powerfully deep cleans dander out of upholstery and surfaces.





## HARD FLOOR GENIE™ ATTACHMENT & CLEANING PAD INSTRUCTIONS

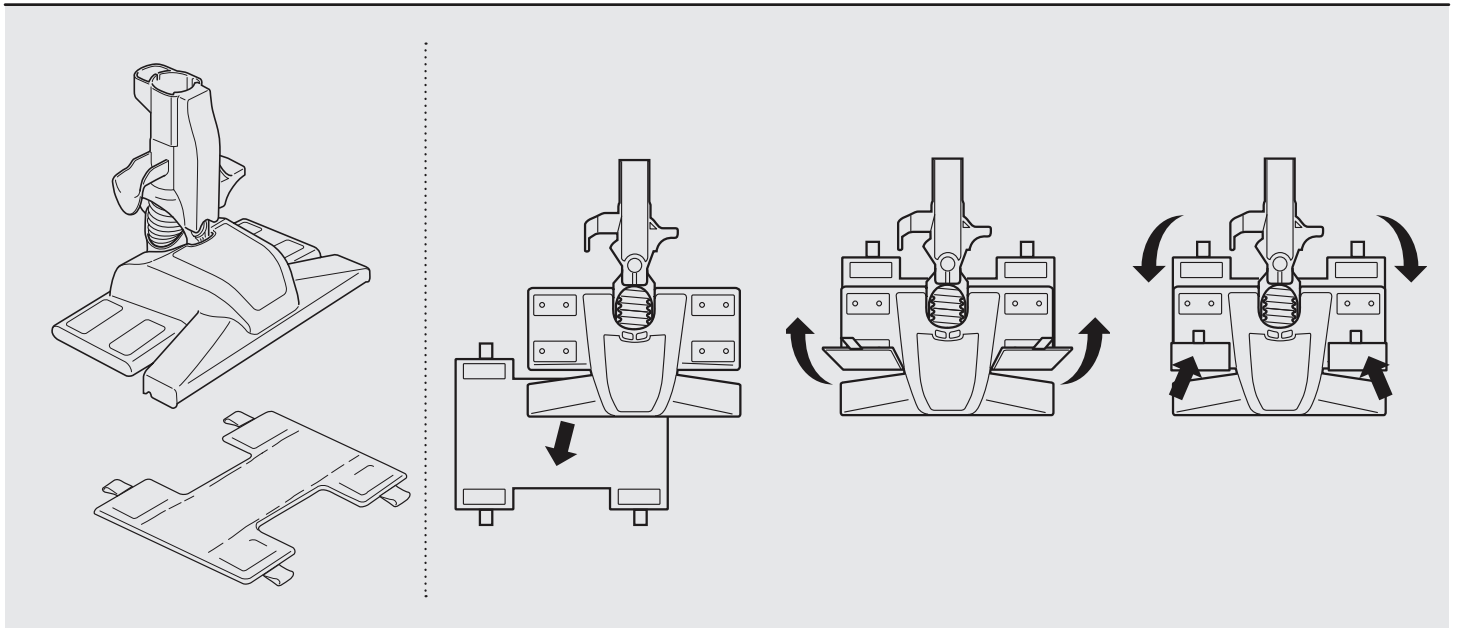
### MICROFIBRE PAD

- 1 Slip two of the tabs between the suction nozzle and the duster base and attach them to the front fasteners on the base. Then pull the other two tabs tightly around to the back fasteners on the base. For best results, ensure that the pad is flat against the bottom surface and secured tightly.
- 2 Use the Hard Floor Genie™ to clean dry bare floor surfaces. Do not use to clean damp floors or wet / sticky messes. Only use pads provided by Shark®, which are designed to work with the Hard Floor Genie™ attachment.
- 3 Wash the pads separately with warm water either in the washing machine or by hand using liquid detergent.

Do not use bleach or fabric softeners as they may damage or leave a coating that will reduce the cleaning performance of the pads.

Tumble dry low or line dry to extend the life of the microfibre fabric.

For best floor cleaning results, we recommend replacing your microfibre pads every 3-4 months following normal use.



## MAINTENANCE

To keep your vacuum's suction power optimal, follow these instructions.

### EMPTY THE DUST CUP

- 1 Detach the handheld portion from the rest of the vacuum by pressing the button on the top of the tube to pull it away from the handheld portion.

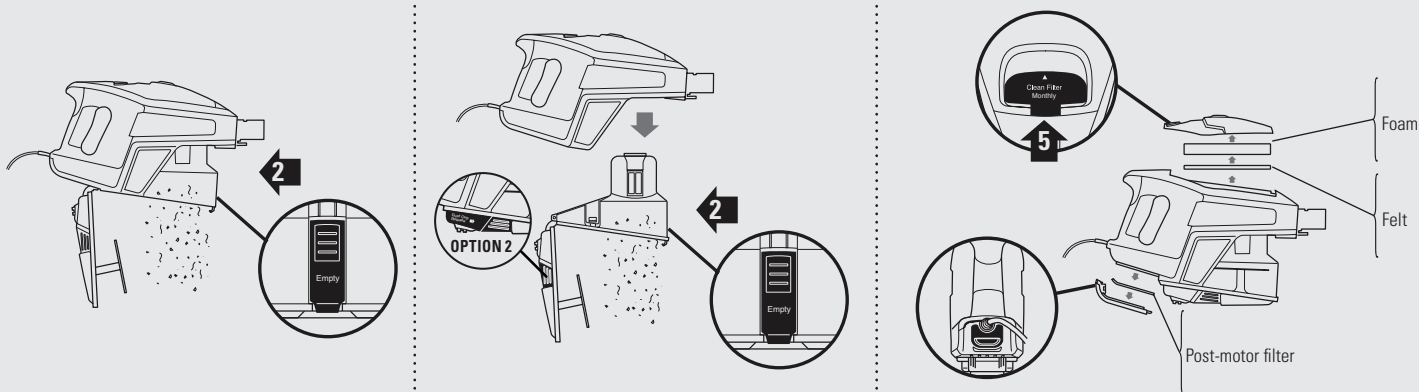
OR

Separate the dust cup from the vacuum by squeezing the two "dust cup release" buttons on both sides of the base together and pulling it straight out. Rest the vacuum on a piece of furniture or lay it flat on the floor.

- 2 Holding the dust cup over a garbage bag or can, press the empty button on the front of the dust cup. The bottom lid will open, allowing the debris to fall out.
- 3 Clean the dust screen inside the dust cup as required.
- 4 When finished emptying the dust cup, close the bottom lid and insert dust cup back into handheld and you will hear it lock in place.

### CLEAN THE FILTERS

- 5 Access the pre-motor filter by lifting the latch on the top of the handheld portion of the vacuum. Remove and rinse the foam and felt filters every month. Hand wash only. Let air dry completely before replacing. Tap loose dirt off filters between washes as needed. Insert the felt filter first and then place the foam filter on top of it.
- 6 Access the post-motor filter under the handle. Remove and rinse once a year. Hand wash only. Let air dry completely before replacing.



## MAINTENANCE

Make sure unit is off and cord unplugged.

### CHECK FOR BLOCKAGES

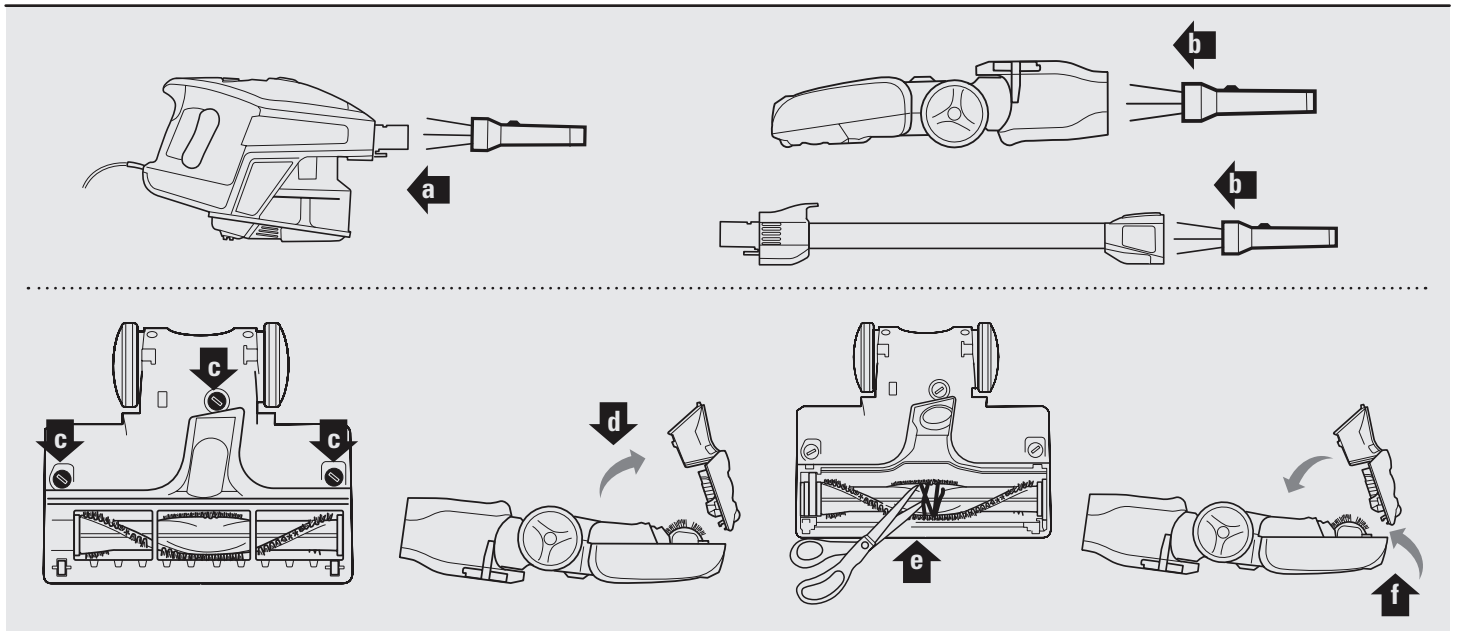
#### REMOVE AND INSPECT:

##### 1 HANDHELD AND TUBE

- a** Remove the tube from the handheld portion and check all dust cup intake openings.
- b** Remove the floor nozzle from the tube and check the tube for blockages.

##### 2 BOTTOM OF FLOOR NOZZLE

- c** Use a coin to unlock the three locks on the bottom of the floor nozzle.
- d** A portion of the base is removable to allow for better access to the brush roll and exposure to the airway. Shine a flashlight from the bottom to check for possible blockage in the airway.
- e** Remove any string, carpet fibres or hair that may be wrapped around the brush roll. There is a groove on the brush bar that allows a pair of scissors to cut across it to loosen up the debris.
- f** To reassemble, replace base by lining it up along the front of the nozzle. Push down to snap into place. Lock the three locks.



## TROUBLE- SHOOTING GUIDE

### **Vacuum is not picking up dirt.**

#### **No suction or light suction.**

- Check filters to see if they need cleaning. Follow instructions for rinsing and drying the filters before re-inserting back into the vacuum.
- Dust cup may be full; empty dust cup.
- Check tube, tube connections, nozzles and accessories for blockages; clear blockages if required.
- Remove any string, carpet fibers or hair that may be wrapped around the brush roll.

#### **Vacuum lifts area rugs**

- Suction is powerful. Take care when vacuuming area rugs or rugs with delicately sewn edges.
- Turn off the unit to disengage the brush roll and restart with the POWER button.

#### **Brush roll does not spin**

- If brush roll indicator light on the floor nozzle turns red, the brush roll has stopped spinning. Immediately turn off and unplug vacuum, disconnect the nozzle and remove blockage before reconnecting and turning vacuum back on.
- If brush roll indicator light on the floor nozzle is green, the blockage has been successfully cleared. If the light is still red, please contact Customer Care at: AUST: 1800 890 840 or NZ: 0800 002 999.

#### **Vacuum turns off on its own**

- This vacuum cleaner is equipped with a motor protective thermostat. If for some reason your vacuum overheats, the thermostat will automatically turn the unit off. Should this occur, perform the following steps to restart the motor thermostat:
  1. Turn the unit off.
  2. Unplug the vacuum.
  3. Empty the dust cup and clean filters.
  4. Check for blockages in tube, accessories and inlet openings.
  5. Allow the unit to cool for a minimum of 30 minutes.
  6. Plug in the vacuum.
  7. Restart the unit by turning the power on.



NOTES



## FIVE (5) YEAR LIMITED REPLACEMENT WARRANTY STATEMENT

If your product becomes defective due to faulty material or workmanship within a period of 5 year from the date of purchase, we warrant to do the following:

- **For New Zealand Consumers:** We will replace the product with a new product, free of charge, or repair the product at our cost, at our discretion.
- **For Australian Consumers:** Our goods come with guarantees that cannot be excluded under the Australian Consumer Law. You are entitled to a replacement or refund for a major failure and for compensation for any other reasonably foreseeable loss or damage. You are also entitled to have the goods repaired or replaced if the goods fail to be of acceptable quality and the failure does not amount to a major failure.

**Your warranty** is subject to the following conditions:

- **DO NOT** operate the appliance with a damaged plug or cord, or if the unit has been dropped, damaged or dropped in water. To avoid the risk of electric shock, do not disassemble or attempt to repair the appliance on your own. If the supply cord is damaged, **it must be replaced by a qualified electrician in order to avoid a hazard**. Incorrect re-assembly or repair can cause a risk of electrical shock or injury to persons when the appliance is used.
- The product has not been misused, abused, neglected, altered, modified or repaired by anyone.
- The product has been subjected to fair wear and tear.
- The product has not been used for trade, professional or hire purposes.
- The product has not sustained damage through foreign objects, substances or accident.

**Your warranty does not cover:**

- Components that are subject to natural wear and tear caused by normal use in accordance with operating instructions.
- Unauthorised/improper maintenance/handling or overload is excluded from this warranty.
- For guarantee claims you will need to submit a proof of purchase in the form of a valid receipt that displays date and place of purchase.

This warranty does not replace but is in addition to your statutory rights.

This warranty does not apply to accessories supplied with the product.

This warranty applies only to the original purchaser and may not be transferred.

Replacement products will be covered by the limited warranty for the balance of the warranty period from the date of the original purchase.

Please note:

Only defective product or parts returned to place of purchase will be replaced under this warranty.

### New Zealand Contact:

Brand Developers Limited  
Unit H, 686 Rosebank Road,  
Avondale 1026, Auckland, New Zealand  
FAX: +64 9 306 8203  
NZ Customer Care 0800 002 999

### Australia Contact

Brand Developers Aust Pty Ltd  
461 Plummer Street,  
PORT MELBOURNE, VIC 3207  
FAX: +61 3 9681 7825  
AUST Customer Care: 1800 890 840



# ***Shark***®

**Distributed by:**

**Brand Developers Aust Pty Ltd**

461 Plummer Street  
PORT MELBOURNE, VIC 3207  
FAX: +61 3 9681 7825  
AUST Customer Care: 1800 890 840



**Brand Developers Ltd**

Unit H, 686 Rosebank Road,  
Avondale, 1026 Auckland,  
NEW ZEALAND  
FAX: +64 9 306 8203  
NZ Customer Care: 0800 002 999



**GMA-102233-EA-010**